

GE APPLIANCES

DUCTLESS HEATING + COOLING



GE APPLIANCES
a Haier company

A PROMISE OF EXPERTISE

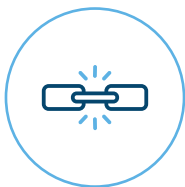
A ductless system from GE Appliances is more than a heating and cooling solution; it's a promise of innovation, durability, and quality, backed by decades of home appliance expertise. Our full line of ductless systems provides quiet operation, efficient performance, and customizable control — everything you'd expect from the brand that's trusted in 50 percent of U.S. homes.*

** Based on major appliances; does not include HVAC products.*



DUCTLESS THAT DOES MORE

When choosing household appliances, you want brands that have earned your trust. Through the decades, we've stayed true to our commitment to quality, durability, and performance, so you can count on us, season after season.



UNYIELDING DURABILITY

All of our systems are tested in extreme environments to ensure they perform, even in the most intense climates.



TOP-NOTCH WARRANTY

Our ductless systems qualify for a 10-year limited warranty on both parts and compressors when you register your equipment online.



COMMITMENT TO QUALITY

All GE Appliances go through rigorous tests to ensure all products meet our production standards — so we can deliver the quality you deserve.

DECODING DUCTLESS SYSTEMS

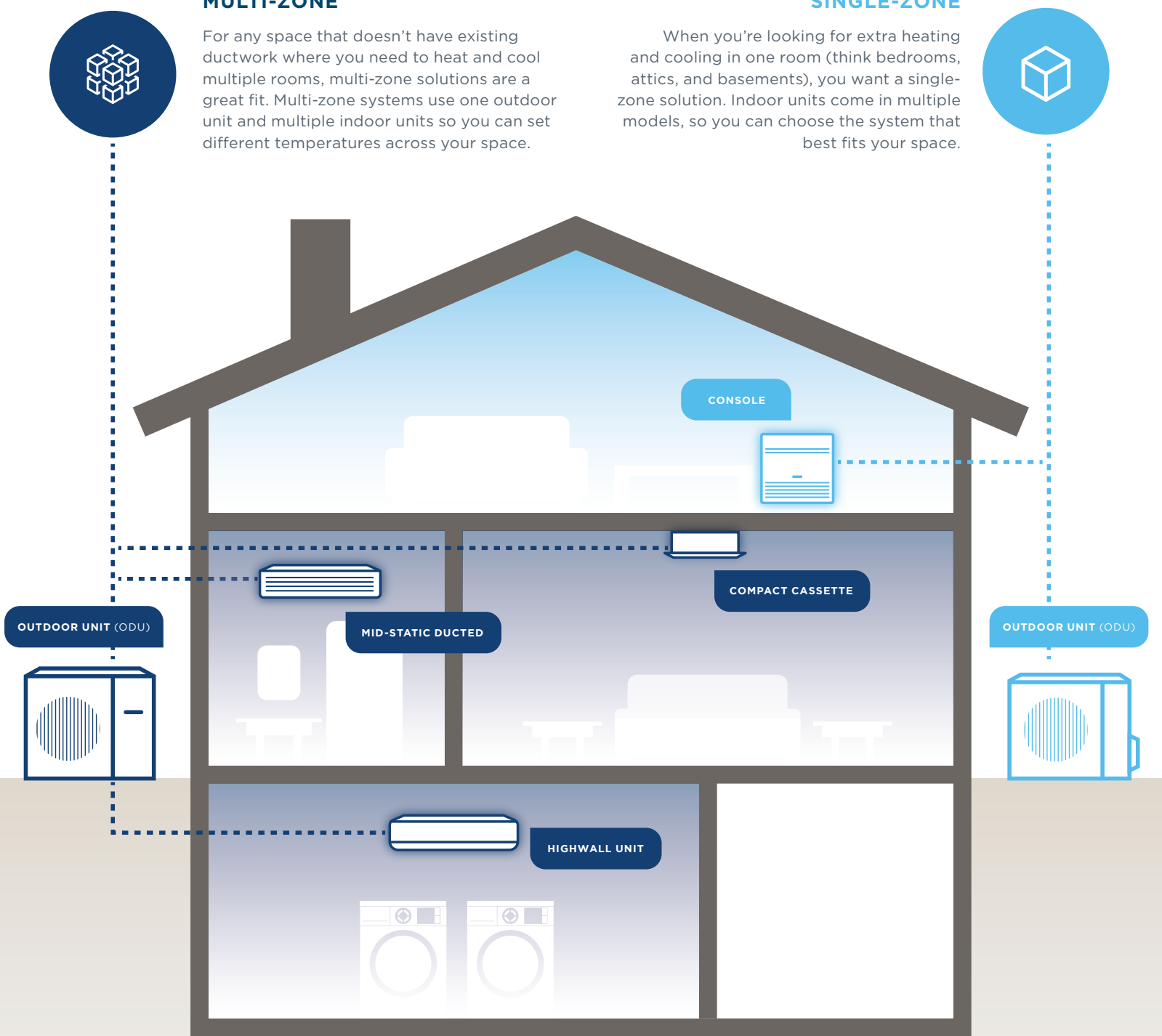
Ductless systems let you control the temperature in your home on a room-by-room basis. They can be used as a supplement to your central HVAC system, or on their own. Every household's heating and cooling needs are unique, so we offer a variety of systems to help you customize your home's temperature from room to room.

MULTI-ZONE

For any space that doesn't have existing ductwork where you need to heat and cool multiple rooms, multi-zone solutions are a great fit. Multi-zone systems use one outdoor unit and multiple indoor units so you can set different temperatures across your space.

SINGLE-ZONE

When you're looking for extra heating and cooling in one room (think bedrooms, attics, and basements), you want a single-zone solution. Indoor units come in multiple models, so you can choose the system that best fits your space.



INDOOR MODEL TYPES



HIGHWALL

Attaches to the wall near the ceiling, works well for all room types.



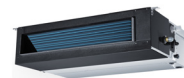
COMPACT CASSETTE

Attaches to the ceiling and delivers wider airflow for large rooms.



CONSOLE

Attaches to the wall near the floor.



MID-STATIC DUCTED

Attaches to the wall and delivers airflow through vents, best for small rooms.

COMPLETING YOUR DUCTLESS SYSTEM

SMARTHQ™ HOME APP

Control your ductless system using wall-mounted controls, remote options, or via the GE Appliances SmartHQ™ Home App.



The Latest Tech:

Over-the-air updates improve performance and add new features.



Smart Home Connectivity:

Compatible with Google Assistant and Amazon Alexa.



Quick Fixes:

HVAC pros can access your system virtually for real-time solutions.

LESS NOISE, MORE COMFORT



LOW-SOUND INVERTER TECHNOLOGY

All ductless systems use state-of-the-art inverters that use smaller engines, which reduces noise from startup to shutdown.



QUIET MODE

Most units come equipped with a quiet mode that reduces noise while maintaining optimal heating and cooling performance.



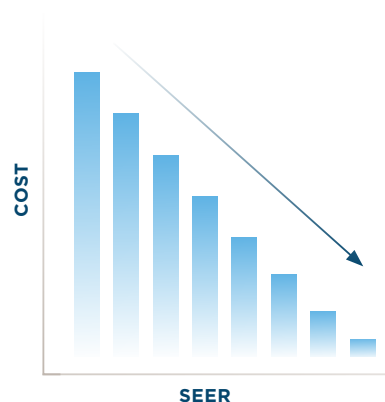
EFFICIENT PERFORMANCE

READY FOR EXTREMES

Lowe ambient heating down to -31F means no more worries that a cold front will knock out your home's heat. With cooling power up to 115F, you'll be comfortable no matter the season.

HIGHER SEER, LOWER COST

Ductless systems are available in efficiency ratings up to 30 SEER2 — meaning you'll save even more money on your energy bills.



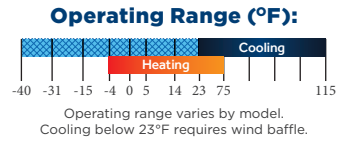
EXPLORE PRODUCT OPTIONS

SINGLE-ZONE SYSTEMS

CALIBER™



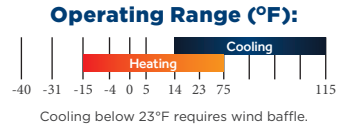
- Up to 20 SEER2, 9.5 HSPF2.
- 9K, 12K BTU 115V options and 9K, 12K, 18K, and 24K BTU 230V options available.
- 24K, 30K, and 36K BTU Low Ambient Cooling Options available.



ALTITUDE™



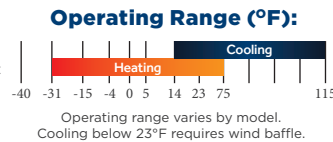
- Up to 23.5 SEER2, 10.5 HSPF2.
- 9K, 12K, 15K, 18K, and 24K BTU options available.



ENDURE™



- Up to 30 SEER2, 14 HSPF2.
- 9K, 12K, and 18K BTU highwall, console, cassette, or mid-static ducted options available.
- 24K, 30K, 36K, 42K, and 48K BTU models available.



BTU (British thermal unit) measures how much energy per hour an air conditioner uses to remove heat from a room. To find out how many BTUs you need from a unit, multiply the square footage of the room where it will be used by 20.

SEER2 (seasonal energy efficiency ratio) measures the maximum efficiency of a cooling unit. The higher the SEER2, the more efficient your cooling system will be.

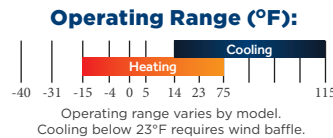
HSPF2 (heating seasonal performance factor) measures the maximum efficiency of a heat pump. The higher the HSPF2, the more efficient your heating system will be.

MULTI-ZONE SYSTEMS

ENDURE™



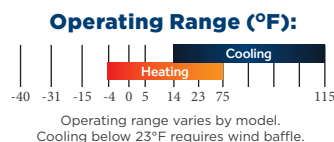
- Up to 19.5 SEER2, 10.2 HSPF2.
- 2-zone, 3-zone and 4-zone available.



MULTILINK™



- Up to 22 SEER2, 10 HSPF2.
- 2-zone, 3-zone, 4-zone and 5-zone* available.



*5-zone MultiLink Series capable of low ambient heating down to -15°F



CONNECT WITH GE APPLIANCES

To learn more about Residential HVAC products from
GE Appliances, contact your GE Appliances dealer.

GE is a trademark of the General Electric Company. Manufactured under trademark license.
GE Appliances has a policy of continuous improvement of its products and reserves the right
to change materials and specifications without notice.



GE APPLIANCES
a Haier company



Pub No: 26-U2201
Rev: 06-13-24